

# Compact and Powerful Pick/Carry Lift

**6 ft** overall length

**31 inches** wide

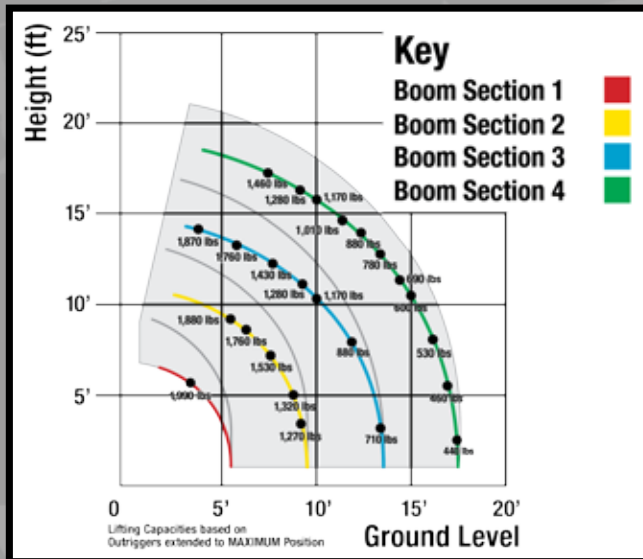


Artist Rendering  
Final Design subject to change

## LOAD CHART

BOOM SECTION 1 EXTENDED								
Working Radius (ft.)	3.3	4.0	4.5	5.0	5.04			
Outriggers Maximum (lbs.)	1,990	1,990	1,990	1,990	1,990			
BOOM SECTION 1 + 2 EXTENDED								
Working Radius (ft.)	6.0	6.5	7.0	8.0	9.0	9.24		
Outriggers Maximum (lbs.)	1,990	1,880	1,760	1,530	1,320	1,270		
BOOM SECTION 1 + 2 + 3 EXTENDED								
Working Radius (ft.)	8.6	9.0	10.0	11.0	12.0	13.0	13.3	
Outriggers Maximum (lbs.)	1,430	1,370	1,200	1,030	850	740	700	
BOOM SECTION 1 + 2 + 3 + 4 EXTENDED								
Working Radius (ft.)	11.1	12.0	13.0	14.0	15.0	16.0	17.0	17.37
Outriggers Maximum (lbs.)	1,010	880	780	690	600	530	460	440

Capacity subject to change



**22ft**  
**Tip Height**

**1,990 lbs**  
**Capacity**

**48V** Battery Power

**WORKING RANGE**

# SPECIFICATIONS

Engine / Motor	  	
Battery	48V 200Ah Battery, with battery meter on dashboard	
Crane Capacity	1,990 lbs	
Drive Radius (ft.)	180° by Steering	
Dimensions When Folded (ft.)	31 inches x 63 inches x 72 inches (W x H x L)	
Weight	2,000 lbs	
Boom	Boom Type:	4-Section Hydraulically Telescoping Boom, with box construction
	Boom Length:	5.6 ft (retracted) to 18 ft (extended)
Traction System	Hydrostatic Drive Motor	
	Wheels:	1 Rear Cushion   2 Front - 18x7-R8 Superelastic
Winch	Capacity:	2,000 lbs at 4th layer (Single-Line)
	Winch Speed:	249 ft/min   Wire Rope Length: 275 ft
Safety Features	<ul style="list-style-type: none"> <li>• Tilt Alarm</li> <li>• Anti Two-Block</li> <li>• Hydraulic Capacity Alert</li> <li>• Counterbalance Valves for Boom Cylinders</li> </ul>	<ul style="list-style-type: none"> <li>• Hook Safety Latch</li> <li>• Automatic Stop for leaving Minimum Wire Rope</li> <li>• Automatic Stop and Alarm for Overwinding</li> <li>• Emergency Stop Button</li> </ul>
Optional Accessories:	<ul style="list-style-type: none"> <li>• Searcher Hook</li> <li>• SPYDERWEB 5-Axis fixed Glass Manipulator - Attaches directly to boom for rigid application</li> <li>• Wood's Powr-Grip Vacuum Lifter</li> <li>• Low-Temperature Kit</li> <li>• Non-Marking Tires</li> </ul>	

Specifications subject to change



5326 W. Mohave St | Phoenix, AZ 85043

844.264.8994 | 602.442.4000

Visit us on the web at [SmileyLiftingSolutions.com](http://SmileyLiftingSolutions.com)

Product specifications are subject to change without notice. No specific training or license is required to operate the PC094 SPYDERCRANE in most areas, but operators are responsible for knowing and meeting all safety requirements and regulations.

PC094 Specs - February 2017

PICK / CARRY LIFT

PC094 SPYDERCRANE