

UNIC
UR-V504

UNIC UR-V504

TRUCK-MOUNTED CRANE



10,000 lbs
MAXIMUM LIFT CAPACITY



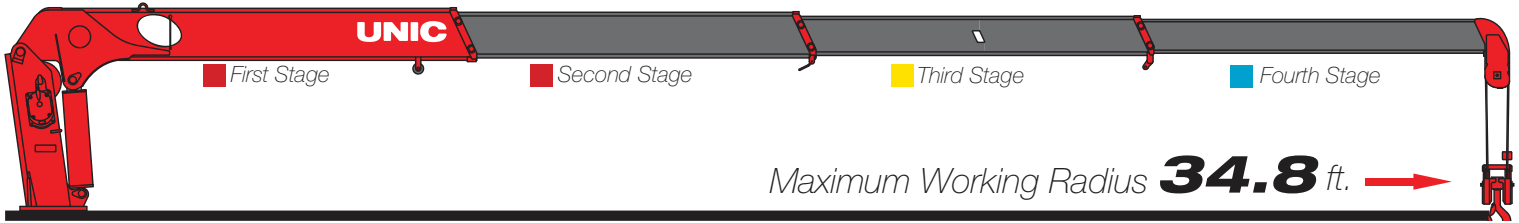
35.6ft | **42ft**
BOOM LENGTH | TIP HEIGHT

**BEHIND
THE CAB
OR REAR**
MOUNTING OPTIONS



**REMOTE CONTROL
OPTION AVAILABLE**

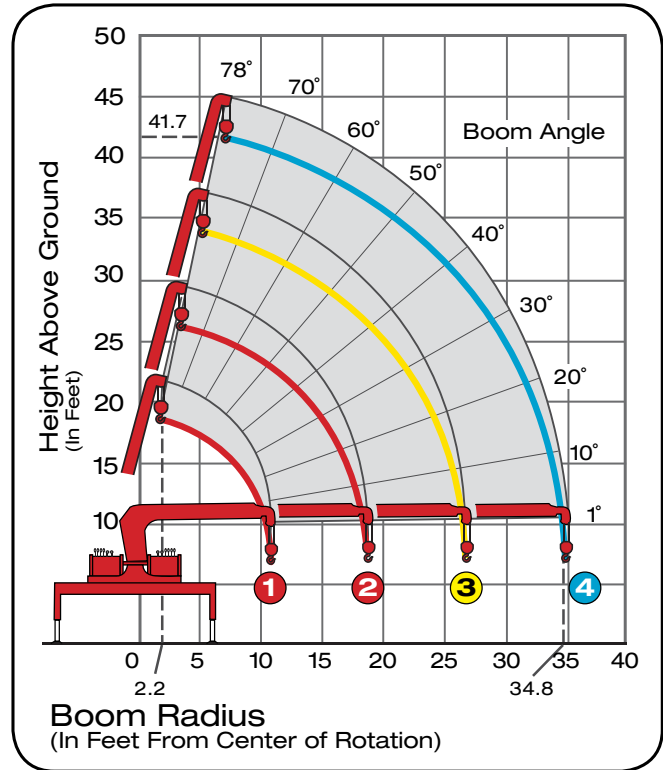
4-Section Boom



Maximum Working Radius **34.8** ft. →

Model UR-V504 Performance Specs

Maximum Lift Capacity	10,000lbs @ 7.7ft
Lift Capacity - 10.9ft	7,100lbs
Lift Capacity - 18.9ft	3,900lbs
Lift Capacity - 26.8ft	2,500lbs
Lift Capacity - 34.8ft	1,700lbs
Tip Height	41.7ft
Working Radius	2.2ft to 32.2ft
Boom Length	11.1ft to 35.6ft
Boom Sections	Four (4)
Swing Rotation	360° Continuous
Out & Down Outriggers	Two (2)
Operating Weight	3,070lbs
Minimum Chassis	25,999 GVWR



Boom Radius	7ft	7.7ft	9ft	10.9ft	12ft	13.5ft	14.8ft	17ft	18.9ft	22ft	24ft	26.8ft	30ft	32ft	34.8ft
1st Stage	10000	10000	8500	7100											
2nd Stage	10000	10000	8500	7100	6700	6300	5700	4750	3900						
3rd Stage				6700	6700	6300	5700	4750	3900	3250	2850	2500	1620		
4th Stage						4500	4500	3900	3400	2580	2600	2350	2100	1900	1700



800.452.5011
smileyliftingsolutions.com

NATIONWIDE RENTALS | SALES | SERVICE
FINANCING AVAILABLE