

UNIC
SPYDERCRANE®

URW706 MINI-CRAWLER
CRANE



71ft Tip Height
81ft with Optional Jib
13,330 lbs Capacity

ENGINEERED TO GO WHERE OTHER CRANES

CAN'T

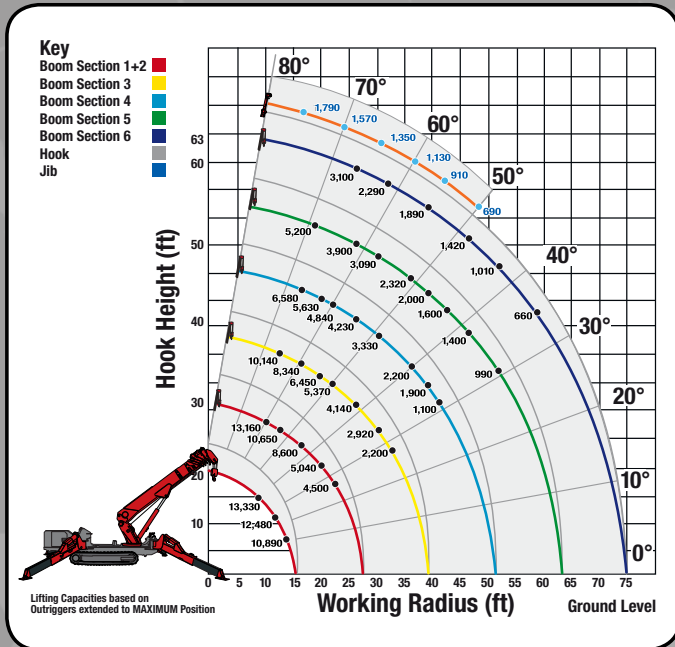
Engineered and manufactured by the Japanese crane industry leader FURUKAWA UNIC, the SPYDERCRANE offers versatility, maneuverability and lifting capacity in a compact design which enables you to quickly, safely and easily meet all of your restricted and confined-area lifting requirements. SPYDERCRANES are exclusively distributed in North America by Smiley Lifting Solutions of Arizona. Each unit is backed by our 20-plus years of industry and application experience, a complete inventory of genuine spare parts and accessories and superior local support.

ASME/B-30.5 Compliant
URW706 Spec Sheet - March 2018

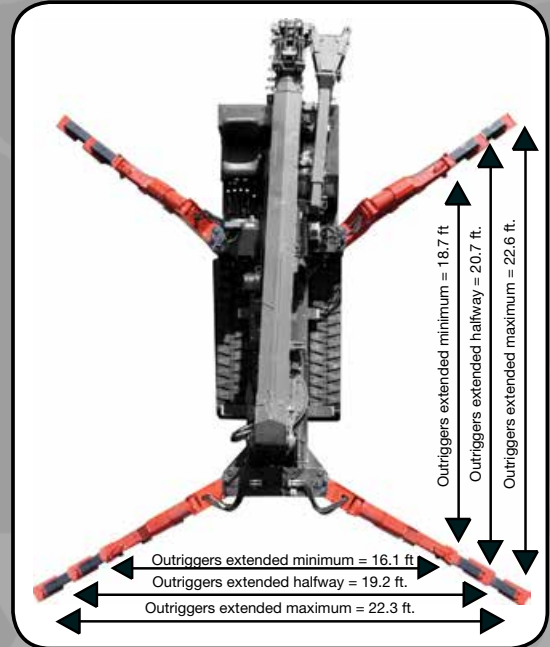
LOAD CHART

BOOM SECTION 1 EXTENDED										
Working Radius (ft.)	9.0	9.8	10.0	11.0	13.0	14.1				
Outriggers Maximum (lbs.)	13,330	13,330	13,200	12,480	10,890	8,810				
Outriggers Halfway (lbs.)	13,330	13,330	13,200	12,480	10,890	8,810				
Outriggers Minimum (lbs.)	13,330	13,330	13,200	12,480	10,270	8,370				
BOOM SECTIONS 1 + 2 EXTENDED										
Working Radius (ft.)	9.0	9.8	10.0	11.0	13.0	16.0	20.0	23.0	23.6	
Outriggers Maximum (lbs.)	13,330	13,330	13,160	12,300	10,650	8,600	6,400	5,040	4,500	
Outriggers Halfway (lbs.)	13,330	13,330	13,160	12,300	10,650	8,600	5,200	3,840	3,520	
Outriggers Minimum (lbs.)	13,330	13,330	13,160	12,300	10,440	5,900	3,550	2,630	2,420	
BOOM SECTIONS 1 + 2 + 3 EXTENDED										
Working Radius (ft.)	9.0	13.0	16.0	20.0	23.0	26.0	30.0	33.0	33.1	
Outriggers Maximum (lbs.)	10,140	10,140	8,340	6,450	5,370	4,140	2,920	2,200	2,200	
Outriggers Halfway (lbs.)	10,140	10,140	8,340	5,480	3,950	3,010	2,100	1,650	1,650	
Outriggers Minimum (lbs.)	10,140	10,140	6,200	3,640	2,750	2,010	1,470	1,030	980	
BOOM SECTIONS 1 + 2 + 3 + 4 EXTENDED										
Working Radius (ft.)	16.5	20.0	23.0	26.0	30.0	32.0	36.0	39.0	42.3	
Outriggers Maximum (lbs.)	6,580	5,630	4,840	4,230	3,300	2,700	2,200	1,900	1,100	
Outriggers Halfway (lbs.)	6,580	5,580	4,170	3,240	2,430	1,950	1,550	1,340	990	
Outriggers Minimum (lbs.)	6,100	4,000	2,960	2,350	1,670	1,290	1,050	840	630	
BOOM SECTIONS 1 + 2 + 3 + 4 + 5 EXTENDED										
Working Radius (ft.)	20.0	26.0	30.0	33.0	36.0	39.0	43.0	46.0	49.0	51.8
Outriggers Maximum (lbs.)	5,200	3,900	3,090	2,720	2,320	2,000	1,600	1,400	1,220	990
Outriggers Halfway (lbs.)	5,200	3,470	2,520	2,160	1,770	1,450	1,180	990	770	650
Outriggers Minimum (lbs.)	4,300	2,470	1,780	1,520	1,210	1,000	750	610	480	390
BOOM SECTIONS 1 + 2 + 3 + 4 + 5 + 6 EXTENDED										
Working Radius (ft.)	26.0	33.0	39.0	46.0	52.0	59.0	61.0			
Outriggers Maximum (lbs.)	3,100	2,290	1,890	1,420	1,010	660	550			
Outriggers Halfway (lbs.)	3,100	2,280	1,560	1,090	790	550	440			
Outriggers Minimum (lbs.)	2,540	1,630	1,120	720	500	300	230			

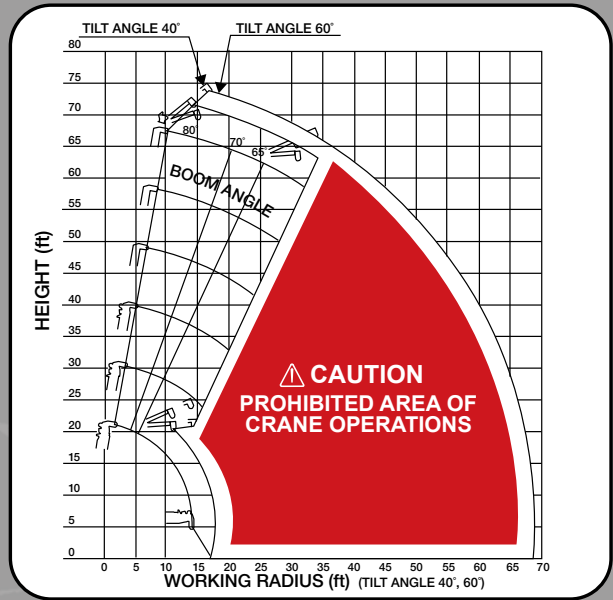
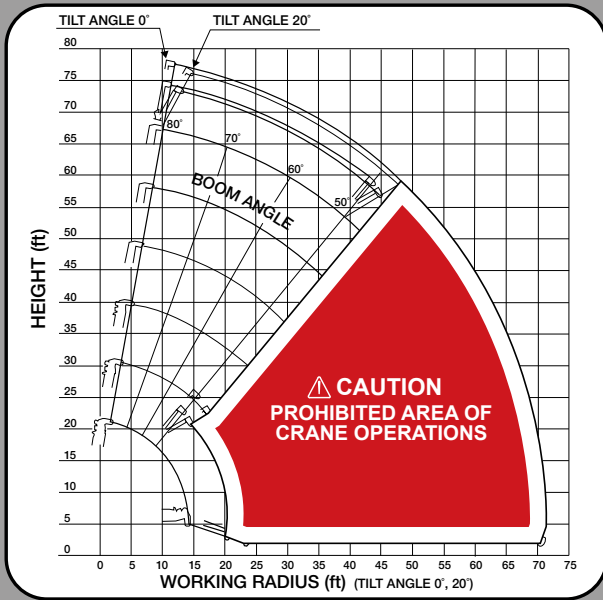
WORKING RADIUS



OUTRIGGERS



EXTENSION JIB WORKING RANGE



Rated Load for Extension Jib in lbs.


Boom Angle	80°	75°	70°	65°	60°	55°	50°	40°	30°	20°	10°	0°
Tilt Angle	0°	1,805	1,805	1,585	1,365	1,145	925	705	PROHIBITED AREA OF CRANE OPERATIONS			
	20°	1,805	1,805	1,585	1,365	1,145	925	705				
	40°	1,365	1,365	1,145	925							
	60°	1,365	1,365	1,145	925							

Rated Load for Searcher Hook in lbs.

Working Radius (ft.)	23	26	29	33	35	36	38	39	43	46	49	52	56	59	68.2
Outriggers Maximum (lbs.)	1,760	1,760	1,760	1,760	1,650	1,430	1,170	1,040	680	550	460	370	260	220	PROHIBITED AREA OF CRANE OPERATIONS
Outriggers Halfway (lbs.)	1,760	1,760	1,570	1,190	1,010	950	790	710	460	310	220				
Outriggers Minimum (lbs.)	1,740	1,370	970	530	400	350	240	220							



SPECIFICATIONS

	URW706C4URS	URW706C4UMRS	URW706C4UBRS
Engine / Motor	DIESEL	DIESEL Electric	DIESEL Electric 
Engine Manufacturer:	Yanmar	Yanmar / AC	Yanmar / DC / AC
Maximum Output:	31.5HP (Tier 4 Compliant)	Diesel - 31.5HP (Tier 4 Compliant) Electric - 10HP* (220V 3-Phase)	48V Battery 110V Electric
Tank Capacity:	19.6 gal	19.6 gal	19.6 gal
Starting Method	Electric Start		
Crane Capacity	13,330 lbs @ 9.8 ft		
Max Working Radius	61 ft		
Tip Height	71 ft (81ft with 10ft Jib)		
Turning Radius	Turns within its dimensions		
Dimensions when Folded (in.)	64" x 84" x 222" (W x H x L)		
Weight	17,590 lbs	17,940 lbs	19,160 lbs
Outrigger Point Loading	(Specific point landing available upon request)		
Winch Speed	144.4 ft/min at 4th layer Hook: 36.1 ft/min at 4th layer	58.1 ft/min at 4th layer Hook: 14.4 ft/min at 4th layer	
Single Line Pull	3,350 lbs - Single Line Pull		
Telescopic System	Boom Type: 6-Section hydraulically telescoping boom, with hexagonal box construction Hydraulic Telescope with Holding Valves: 47.2 ft. / 52 Seconds (47.2 ft. / 90 Seconds - Diesel/Electric/Battery model)		
Swing Rotation	360° Continuous Worm Drive		
Boom Lift Speed	0° - 80° / 16 sec	0° - 80° / 37 sec	
Traction System	Travel Speed: Low - .75 mph High - 1.8 mph		
	Gradability: 23° Track Ground Pressure: 12.47 psi		

Standard Features | Options | Safety Equipment

- Full-function radio remote control
- Centrally located infinite variable controls
- Onboard self-diagnostic computer system
- Hexagonal boom
- Anti-two block system
- Automatic hook stow system
- Over-winding prevention device and alarm
- Minimum wire rope automatic stop
- Hydraulic circuit pressure relief valve with bubble-style level for outrigger leveling
- Full LMI Overload System with operator's display
- Interlock Monitoring Outrigger and Boom System

OPTIONAL:

- Custom SPYDERCRANE trailer with track mats, tool box, outrigger pads and fuel containers
- MYLAR® white non-marking tracks
- Gravity hung, self-leveling Work Platform



UNIC SPYDERCRANE®

Visit us on the web at

SPYDERCRANE.COM

A Division of



5326 W. Mohave St | Phoenix, AZ 85043
844.264.8994 | 602.442.4000

Product specifications are subject to change without notice. No specific training or license is required to operate the SPYDERCRANE in most areas, but operators are responsible for knowing and meeting all safety requirements and regulations.