



# Performance Specifications

---

---

**Telescopic Hydraulic Truck Crane**

**Model**

**UR1563**

*Rear Mounts   Behind the Cab Mounts   Tractor Mounts   Trailer Mounts*

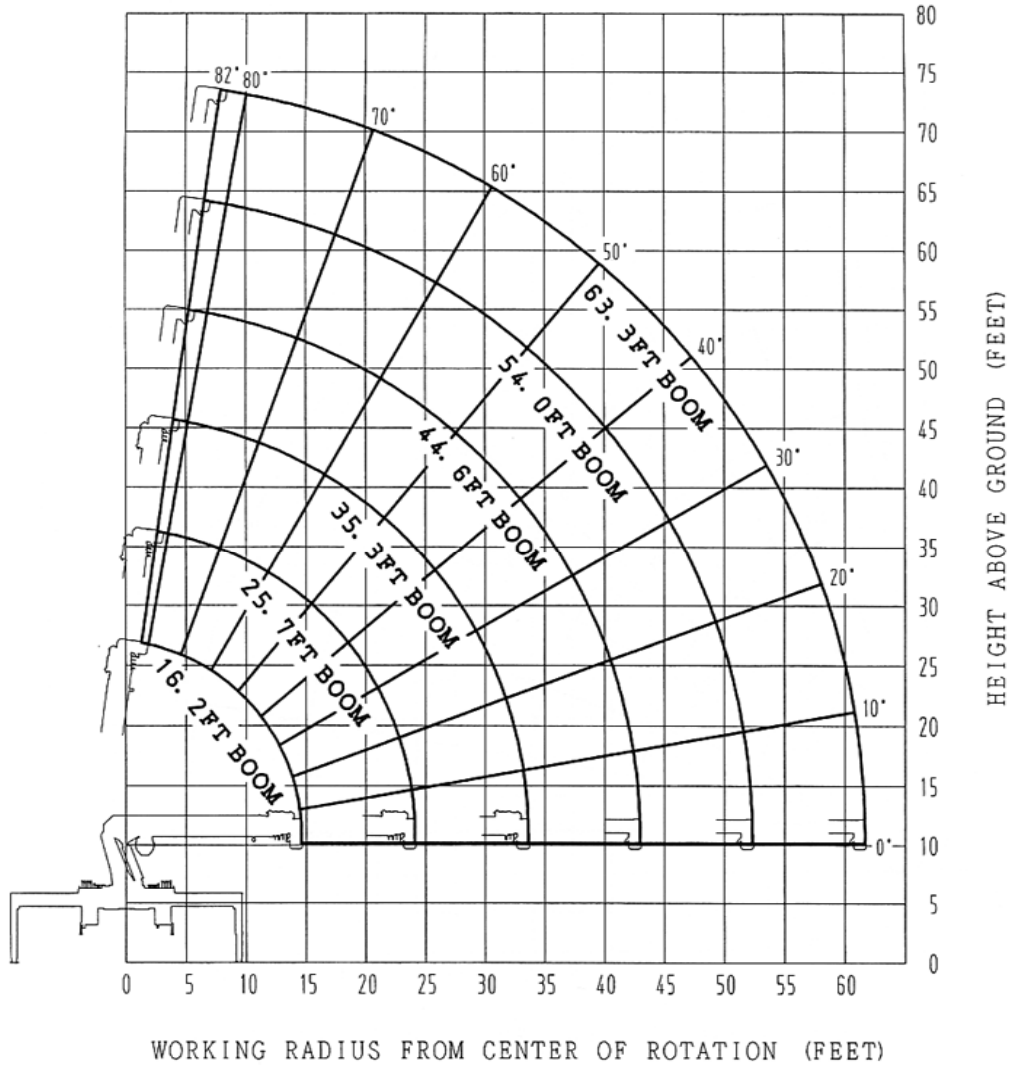
Specifications Subject to Change without Notice

---

FURUKAWA UNIC PRODUCTS FOR NORTH AMERICA

<b>Crane Capacity</b>	
Maximum Lift Capacity	30,000 @ 4.0 feet with Four Part Line
Work Radius	Minimum 3.0 feet to Maximum to 61.6 feet
Boom Length	16.2 feet to 63.3 feet
Tip Height	74 feet - with Two Stage Jib 98 feet
<b>Boom Design</b>	Six (6) Section Box Beam Telescoping, Keel Top and Bottom with Angle Indicator.
Boom Extending Speed	47.1 feet / 32 Seconds.
Boom Lifting Cylinder Design	Double Acting Type with Counterbalance Valve.
Boom Travel Position	Preferred Forward Over the Cab but Also Rear over the Body.
Boom Raising Speed	-10° to 82° / 16.2 Seconds.
<b>Winch Design</b>	Hydraulic motor driven, Planetary Gear Reduction, with Automatic Mechanical Brake and Counterbalance Valve.
Single Line Pull	9,500 lbs. at first layer
Hoisting Speed Single Line (Low)	128 feet / minute @ 3rd Layer.
Hoisting Speed Single Line (High)	256 feet / minute @ 3rd Layer
Hydraulic Motor	Axial Plunger type.
Wire Rope Construction	IWRC 6xWS(31) <sup>L</sup>
Diameter x Length	9/16 inch x 236 feet
Breaking Strength	33920 lbs.
<b>Swing Design</b>	Hydraulic Motor Driven, Worm and Spur Gears Reduction, Worm Self-Locking Brake.
Swing Range	360° Continuous Rotation on Ball Bearing. Non-Stop.
Hydraulic Motor	Trochoid type
Swing Speed	1.4 rpm.
<b>Outrigger Design</b>	Out & Down Style. Full Hydraulic Power Horizontal and Vertical Travel. Pilot Operated Check Valves.
Main Outrigger Spans	Retracted 7.4 feet. Extension 18.7 feet
Auxiliary Outrigger Spans	BC Under Frame Retracted 7.4 ft. Extended 11.5 ft.
Auxiliary Outrigger Spans	RM Over Frame Retracted 7.4 ft. Extended 18.7 ft.
<b>Hydraulic System</b>	75 Gallon Oil Tank
Control Valves	Multiple Control Valves, Spring Centered Spool-Type with Pressure Relief Valve.
System Operating Pressure	2850 PSI (All Functions)
Hydraulic Pump	Three Sections
System Flows	Winch: 26.4 GPM – Boom – 26.4 GPM – Swing – 12.7 GPM
<b>Operating Weight</b>	9370 lbs.
<b>Safety Devices</b>	Capacity Alert System, ATB System, Outrigger Motion Alarm

RANGE DIAGRAM:



Note : Boom Deflections Not Shown.

**AVAILABLE OPTIONS**

- One Man Steel Basket
- Two Man Steel Basket
- 24 ft. Two Stage Jib
- Load Blocks (One and Two Sheave)
- Radio Remote Control System

Working Radius	B o o m L e n g t h					
	16.2 feet	25.7 feet	35.3 feet	44.6 feet	54.0 feet	63.3 feet
Feet	Lbs.	Lbs.	Lbs.	Lbs.	Lbs.	Lbs.
4	30,000	13,200				
5	24,000	13,200	10,000			
8	16,500	13,200	10,000	6,500		
10	13,500	13,200	10,000	6,500	5,200	
12	10,500	11,000	10,000	6,500	5,200	3,000
15		9,200	9,000	6,500	5,200	3,000
20		6,200	6,500	5,600	5,200	3,000
25			4,800	4,400	4,100	3,000
30			2,800	3,300	3,100	2,500
35				2,500	2,400	2,100
40				1,500	1,900	1,800
45					1,500	1,500
50						1,100
55						800

Boom Angle Zero Degrees	4,500	1,700	800	400	330	220
Working Radius	14.6'	24.1'	33.6'	42.9'	52.3'	61.6'

**CAUTION**

1. Fully extend all outriggers on solid, level surface leveling vehicle.
2. Rated loads shown in the chart are based on the crane strength rather than stability.
3. Rated loads shown must be reduced in accordance with vehicle weight and loaded condition of truck, crane-mounting position, wind, ground condition and operating speed.
4. The weights of hook (Single Line Hook: 110 lbs., Two (2) Part Load Block 135 lbs., Four (4) Part Load Block 146 lbs., Slings, and any accessories attached to the boom load line must be deducted from the above rated loads in the chart.
5. The wire rope load line used on this crane has specific load limitations, as follows:

One Single Line	Two Part Line	Three Part Line	Four Part Line <sup>L</sup>
<b>Maximum Load</b> <b>9,500 lbs.</b>	<b>Maximum Load</b> <b>19,000 lbs.</b>	<b>Maximum Load</b> <b>28,500 lbs.</b>	<b>Maximum Load</b> <b>30,000 lbs.</b>

In Accordance with Furukawa UNIC Policy of Constant Product Improvement, all Specifications are Subject to Change without Notice or Obligations.