



Performance Specifications

**Telescopic Hydraulic Truck
Mounted Crane**

Spyder Model

UR1582 Behind the Cab

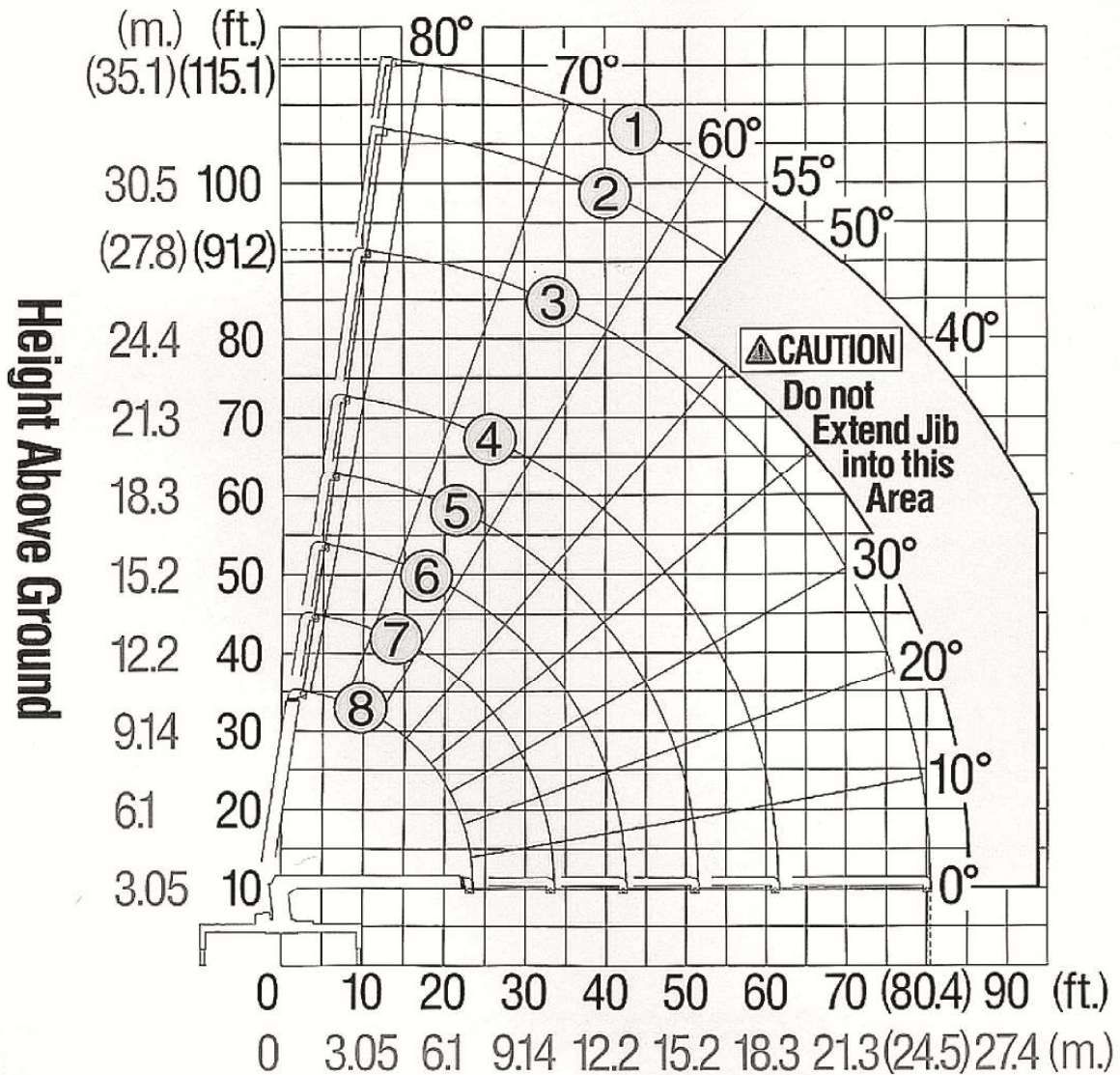
Specifications subject to change without notice

FURUKAWA UNIC PRODUCTS FOR NORTH AMERICA

<i>Crane Capacity</i>	
Maximum Lift Capacity	30,000 @ 4.0 feet
Work Radius	Minimum 3.0 feet to Maximum to 80.4 feet
Boom Length	82 feet
Tip Height	91.4 feet. With Two Stage Jib 115.1 feet
<i>Boom Design</i>	Five (4) section box beam telescoping, keel top and bottom with angle indicator.
Boom Length	25 feet to 82 feet
Boom Extending Speed	57 feet / 63 seconds.
Boom Lifting Cylinder Design	Double Acting type with counterbalance valve.
Boom Travel Position	Forward over the cab or rear over the body.
Boom Raising Speed	-10° to 82° / 16.2 seconds.
<i>Winch Design</i>	Hydraulic motor driven, Planetary Gear Reduction, with Automatic Mechanical Brake.
Single Line Pull	8700 lbs. at first layer
Hoisting Speed Single Line (Low)	112 feet / minute @ 3rd Layer.
Hoisting Speed Single Line (High)	223 feet / minute @3 rd Layer
Hydraulic Motor	Trochoid type.
Wire Rope Construction	6xWS(31)WRC
Diameter x Length	9/16 inch x 236 feet
Breaking Strength	33920 lbs.
<i>Swing Design</i>	Hydraulic motor driven, worm and spur gears reduction, worm self-locking brake.
Swing Range	360° continuous rotation on ball bearing.
Hydraulic Motor	Trochoid type
Swing Speed	1.4 rpm.
<i>Outrigger Design</i>	Out & Down Style. Full hydraulic power horizontal and vertical travel. Pilot Operated Check Valves.
Main Retracted Span	7.4 feet
Main Extended Span	18.7 feet
Auxiliary Outrigger Span	7.4 feet
Auxiliary Outrigger Span	11.5 feet

<i>Hydraulic System</i>	Multiple control valves, spring centered spool type, with pressure relief valve.
Pressure Relief	2850 psi
Oil Reservoir Capacity	52 gallons.
Oil Strainer	100 micron wire mesh.
Return Filter	10 micron replaceable type.
Recommended Hydraulic Pump	Three Section Vane @ 2850 psi
	Winch: 26.4 GPM
	Boom: 26.4 GPM
	Swing: 12.7 GPM
Recommended Hydraulic Oil	ISO VG 46 for temps above 32 F, ISO VG 22 below 32F
<i>Operators Stations</i>	Dual stations curb and street side with crane and outrigger controls on each side.
<i>Standard Safety Equipment</i>	Anti-Two-Block , Outrigger motion Alarms, Horn, Engine Start/Stop Switch, Bubble Levels, Capacity Alert System,
<i>Electrical System</i>	12 Volt
<i>Operating Weight</i>	14, 075 lbs.
<i>Manuals</i>	Complete Set. Parts, Service and Operators or Spydercrane Manuals on CD.
<i>Warranty</i>	12 months.
<i>Available Items</i>	Greer LMI System Model 586 Radio Remote Control System One Man Steel Basket Two Man Steel Basket Two Stage Steel Jib. 15 feet to 24 feet Job-Site-Leave-On Jib 10 feet
<i>Minimum Chassis</i>	33,000 GVWR
<i>Minimum Chassis Frame</i>	1,700,000 RBM and Full length Closed Box Subframe
<i>Front Axle</i>	12,000 lbs.

UR-1582 TYPE WITH JIB RANGE DIAGRAM



Working Radius From Center of Rotation

- | | | |
|-------------------------------|--------------------------|--------------------------|
| ① Boom & 24 ft. / 7.32 m. Jib | ③ 82 ft. / 25.0 m. Boom | ⑥ 44 ft. / 13.41 m. Boom |
| ② Boom & 15 ft. / 4.57 m. Jib | ④ 63 ft. / 19.2 m. Boom | ⑦ 35 ft. / 10.67 m. Boom |
| | ⑤ 53 ft. / 16.15 m. Boom | ⑧ 25 ft. / 7.62 m. Boom |

Note: Boom Deflection Not Shown

Working Radius	25 feet	35 feet	44 feet	53 feet	63 feet	82 feet
Feet	Lbs.	Lbs.	Lbs.	Lbs.	Lbs.	Lbs.
4	30000					
5	24000					
8	16800	14200	14200			
10	14200	13400	13000	12600		
12	12200	11500	11100	10800	9430	
15	10100	9530	9130	8830	7730	
20	7250	7330	7030	6730	6430	4700
25		5500	5500	5430	5230	3650
30		4100	4000	4330	4230	3050
35			3000	3300	3350	2560
40			2300	2500	2640	2110
45				1910	1990	1760
50				1430	1600	1520
55					1200	1250
60					890	990
65						770
70						590
75						390

Note:

1. Rated loads on the above chart are maximum allowable load with the outriggers fully extended on firm level ground and based on the actual working radius including the deflection of the boom.
2. Weights of hook (110 lbs), Slings and any accessories to the boom or load line must be deducted from the rated loads.
3. Four Foot Radius Lifts are only attainable with Four Part Load Block
4. Five Foot Radius Lifts are only attainable with Three Part Load Block
5. Eight, Ten, and Twelve Foot Radius Lifts are only attainable with Two Part Load Block.
6. All other Radius Lifts our attainable with Single Part Line and Hook.

Available Options:

1. **Radio Remote Control**
2. **One Man Steel Basket**
3. **Two Man Steel Basket**
4. **Two Stage Steel Jib. 15 feet to 24 feet**
5. **Job-Site-Leave-On Jib (10 feet).**

Area of Operation

