

# *SPECIFICATIONS*

SPEC. No. CT-2204  
DATE FEB. 2010

---

**SPECIFICATIONS  
HYDRAULIC CRANE**

**MODEL : UNIC UR1592**

Specifications subject to change without notice.

---

**FURUKAWA UNIC CORPORATION**  
*EXPORT TECHNICAL DEPT*  
*TOKYO JAPAN*

**UNIC CRANE PERFORMANCE**  
**MODEL : UR1592**

**CRANE CAPACITY:**

**LIFTING CAPACITY** : Max. 30,000 lbs. at 4 ft.  
: Max. 133.6 kN {13,620 kgf} at 1.22m  
with 4-part line

**SHEAVE HEIGHT** : Max. 101.1 ft.  
: Max. 30.8 m

**WORKING RADIUS** : Max. 80.0 ft.  
: Max. 24.4 m

**BOOM:**

4-section box beam type telescoping boom

Boom Length ; 28 ft. to 92 ft.  
8.48 m to 28.04 m

Boom Telescoping Cylinder ; Double acting type with counter balance valve

Boom Extending Speed ; 64 ft. / 69 sec  
19.56 m / 69 sec

Boom Raising Cylinder ; Double acting type with counter balance valve

Boom Raising Speed ; -10° to 82° / 16.2 sec

**WINCH:**

Hydraulic motor driven, planetary gear reduction, with automatic mechanical brake and counter balance valve.

Single Line Pull ; 9,500 lbs. at 1st layer  
42.2 kN {4,300 kgf} at 1st layer

Single Line Speed  
Lo ; 128 FPM at 3rd layer  
39.0 m/min at 3rd layer

Hi ; 256 FPM at 3rd layer  
78.0 m/min at 3rd layer

Hydraulic Motor ; Axial plunger type

Single Line Hook ; 9,500 lbs. Capacity  
42.2 kN {4,300 kgf} Capacity

4-part Line Hook ;  
(option) 30,000 lbs. Capacity  
133.6 kN {13,620 kgf} Capacity  
3 sheaves block with latch

Wire Rope  
Construction ; IWRC 6 x WS(31)  
Diameter x Length ; 9/16 in. x 285 ft.  
14 mm x 87 m  
Breaking Strength ; 33,920 lbs.  
151 kN {15,400 kgf}

**SWING:** Hydraulic motor driven, worm and spur gear reduction  
with worm self-locking brake.

Slewing Range ; 360 ° continuous rotation on a ball bearing race.  
Slewing Speed ; 1.4 rpm  
Hydraulic Motor ; Trochoid type

**OUTRIGGERS:** Vertical jacks and horizontal beams.

Vertical Jacks ; Double acting hydraulic cylinders  
with pilot-operated check valves  
Horizontal Beams ; Double acting hydraulic cylinders  
with pilot-operated check valves  
Outrigger Span ; 7.4 ft. to 18.7 ft.  
2.26 m to 5.7 m

**REAR OUTRIGGERS:** Vertical jacks and horizontal beams.

(option)  
Vertical Jacks ; Double acting hydraulic cylinders  
with pilot-operated check valves  
Horizontal Beams ; Double acting hydraulic cylinders  
with pilot-operated check valves  
Rear Outrigger Span ; 7.4 ft. to 11.5 ft.  
2.26 m to 3.5 m

**HYDRAULIC SYSTEM:**

Control valve ;	Multiple control valve, spring centered, spool-type, with pressure relief valve.
System Pressure ;	2,850 PSI (All functions) 19.6 MPa {200 kgf/cm <sup>2</sup> } (All functions)
Hydraulic Pump ;	3-section gear pump
System Flows	
Winch ;	26.4 GPM, 100 L/min
Boom ;	26.4 GPM, 100 L/min
Swing ;	12.7 GPM, 48 L/min at pump 2,000 rpm

**TOTAL CRANE WEIGHT:**

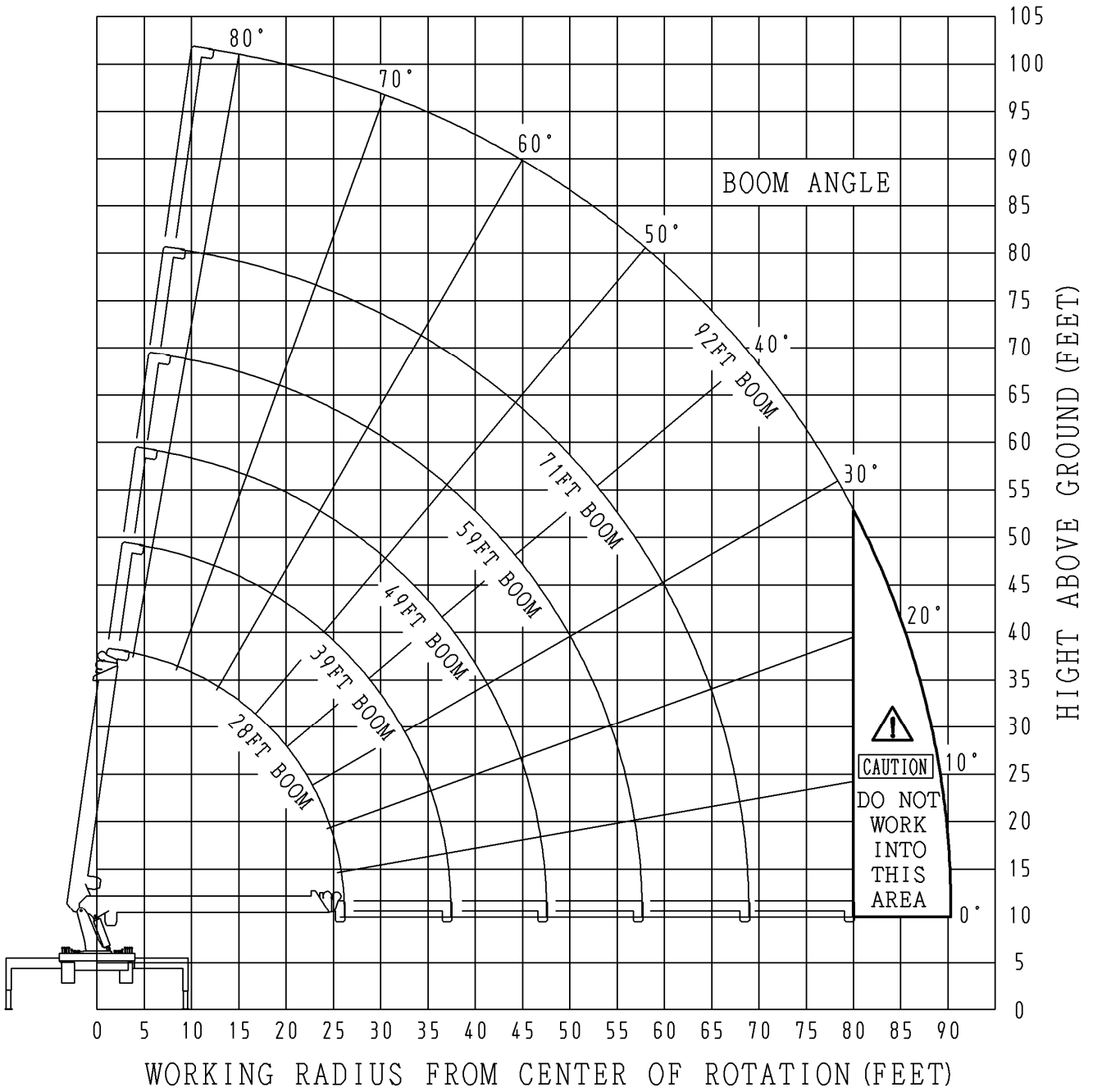
Total Crane Weight ;	11,580 lbs. {5,250 kgf}
Main body of crane ;	10,980 lbs. {4,980 kgf}
Rear Outrigger (option) ;	600 lbs. {270 kgf}

**SAFETY DEVICES:**

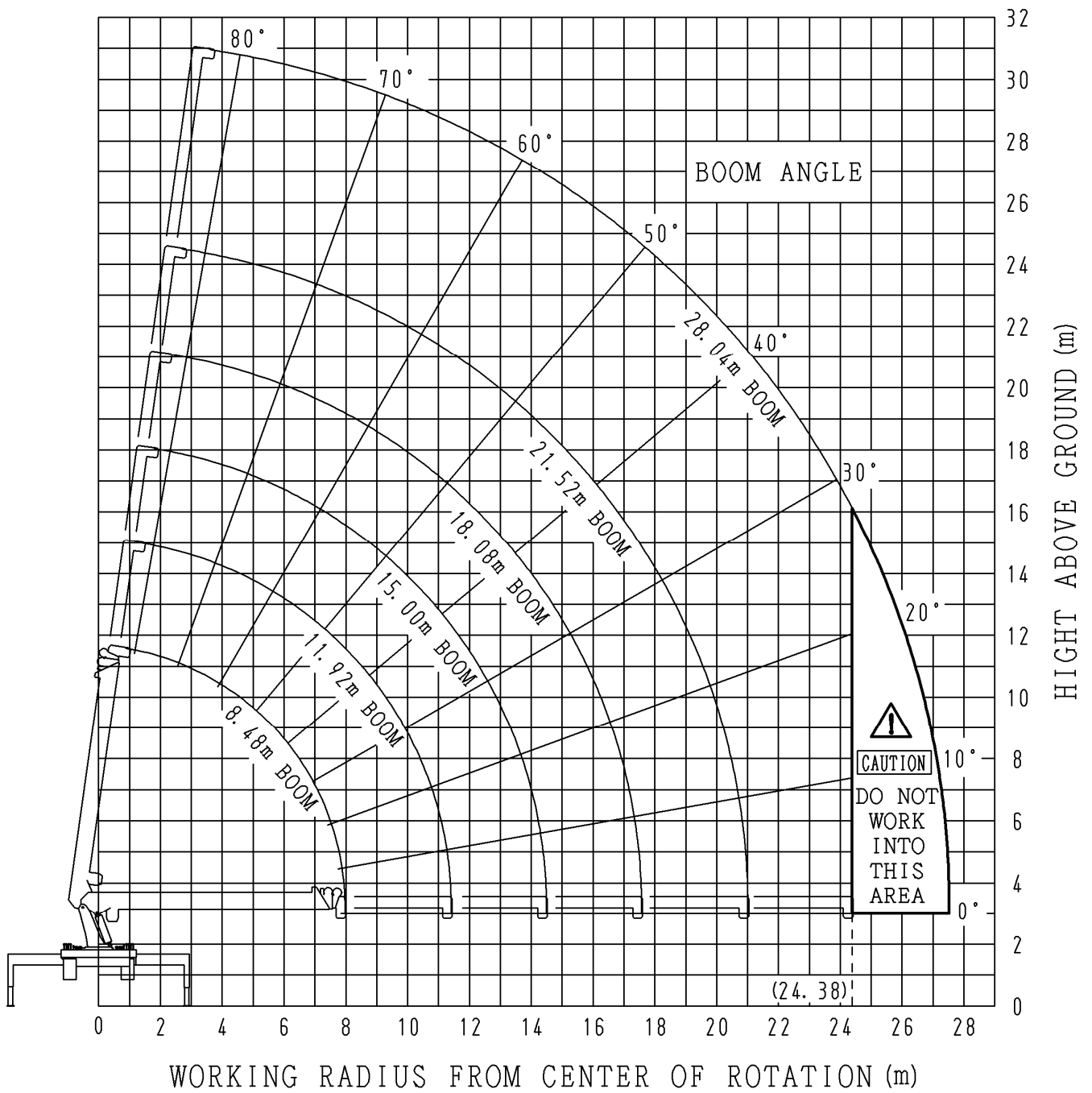
1. Capacity Alert System (option)
2. Anti Two-Block System
3. Outrigger Motion Alarm
4. Over-front Alarm

**Note:** The figures in relation to the speed are on the basis of no-load running at rated oil flow condition.

RANGE DIAGRAM:



**Note :** Boom Deflections Not Shown.



**Note :** Boom Deflections Not Shown.

**RATED LOADS:**

Working Radius		Boom Length											
		28ft (8.48m)		39ft (11.92m)		49ft (15.00m)		59ft (18.08m)		71ft (21.52m)		92ft (28.04m)	
ft	m	LBS	{kgf} kN	LBS	{kgf} kN	LBS	{kgf} kN	LBS	{kgf} kN	LBS	{kgf} kN	LBS	{kgf} kN
4	1.22	30,000	{13,620} 133.57										4-part line area
5	1.52	23,500	{10,660} 104.53										3-part line area
8	2.44	16,300	{7,390} 72.51	13,800	{6,260} 61.39	13,800	{6,260} 61.39						2-part line area
10	3.05	13,700	{6,210} 60.94	13,000	{5,900} 57.83	12,600	{5,720} 56.05	12,300	{5,580} 54.71				
12	3.66	11,700	{5,310} 52.04	11,100	{5,040} 49.38	10,700	{4,850} 47.60	10,500	{4,760} 46.71	9,100	{4,130} 40.48		1-part line area
15	4.57	9,700	{4,400} 43.15	9,150	{4,150} 40.70	8,750	{3,970} 38.92	8,500	{3,860} 37.81	7,400	{3,360} 32.92		
20	6.10	7,150	{3,240} 31.80	6,950	{3,150} 30.92	6,700	{3,040} 29.80	6,400	{2,900} 28.47	5,800	{2,630} 25.80	5,000	{2,270} 22.24
25	7.62			5,200	{2,360} 23.13	5,200	{2,360} 23.14	5,100	{2,310} 22.69	4,500	{2,040} 20.02	4,000	{1,820} 17.79
30	9.14			4,050	{1,840} 18.02	3,750	{1,700} 16.68	4,050	{1,840} 18.02	3,550	{1,610} 15.79	3,200	{1,450} 14.23
35	10.67			2,850	{1,290} 12.68	2,850	{1,290} 12.68	3,050	{1,380} 13.57	2,900	{1,320} 12.90	2,650	{1,200} 11.79
40	12.19					2,300	{1,040} 10.23	2,300	{1,040} 10.23	2,350	{1,070} 10.45	2,200	{1000} 9.79
45	13.72					1,550	{700} 6.89	1,800	{820} 8.04	1,850	{840} 8.23	1,800	{820} 8.04
50	15.24							1,450	{660} 6.45	1,500	{680} 6.67	1,450	{660} 6.45
55	16.76							950	{430} 4.23	1,200	{540} 5.34	1,200	{540} 5.34
60	18.29									880	{400} 3.91	930	{420} 4.14
65	19.81									450	{200} 2.00	770	{350} 3.43
70	21.34											600	{270} 2.67
75	22.86											440	{200} 1.96
80	24.38											330	{150} 1.47

## CAUTION

1. Fully extend all outriggers on solid, level surface leveling vehicle.
2. Rated loads shown in the chart are based on the crane strength rather than stability.
3. Rated loads shown must be reduced in accordance with vehicle weight and loaded condition of truck, crane mounting position, wind, ground condition and operating speed.
4. The weights of hook [Single line hook : 110 lbs. (0.49 kN {50 kgf}), 4-part line hook(option) : 280 lbs. (1.24 kN {127 kgf})], slings and any accessories attached to the boom or loadline must be deducted from the above rated loads in the chart.
5. The wirerope loadlines used on this crane have specific load limitations, as follows:

1 part line	2 part line	3 part line	4 part line
Load up to 9,500 lbs. 42.2 kN {4,300 kg}	Load up to 19,000 lbs. 84.4 kN {8,600 kg}	Load up to 28,500 lbs. 126.6 kN {12,900 kg}	Load up to 30,000 lbs. 133.6 kN {13,620 kg}

6. In accordance with our policy of constant product improvement, all specifications are subject to change without notice or obligations.