

UNIC
UR-U554

UNIC UR-U554

TRUCK-MOUNTED CRANE



11,100 lbs
MAXIMUM LIFT CAPACITY



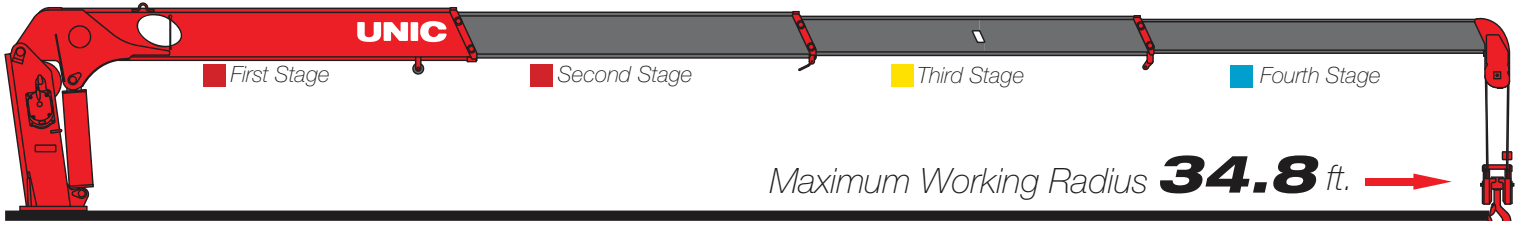
35.6ft | 42ft
BOOM LENGTH | TIP HEIGHT

**BEHIND
THE CAB
OR REAR**
MOUNTING OPTIONS



**REMOTE CONTROL
INCLUDED**

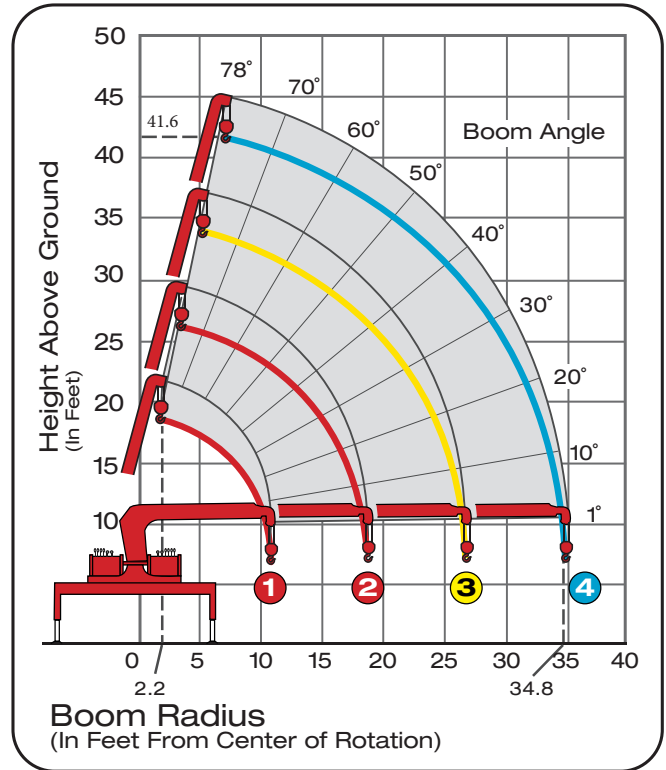
4-Section Boom



Maximum Working Radius **34.8** ft. →

Model UR-U554 Performance Specs

Maximum Lift Capacity	11,100lbs @ 8.2ft
Lift Capacity - 11.0ft	7,700lbs
Lift Capacity - 18.9ft	4,150lbs
Lift Capacity - 26.2ft	2,500lbs
Lift Capacity - 34.8ft	1,750lbs
Tip Height	45ft
Working Radius	2.3ft to 34.8ft
Boom Length	11.8ft to 35.6ft
Boom Sections	Four (4)
Swing Rotation	360° Continuous
Out & Down Outriggers	Two (2)
Operating Weight	3,600 lbs
Minimum Chassis	25,999 GVWR



Boom Radius	8.2ft	9.8ft	11.0ft	13.1ft	14.7ft	16.4ft	18.0ft	18.9ft	21.3ft	22.9ft	24.6ft	26.2ft	29.5ft	32.8ft	34.8ft
1st Stage	11100	8900	7700												
2nd Stage	8900	8900	7350	6500	5700	5050	4250	4150							
3rd Stage		6700	6700	6500	5700	5050	4250	3850	3400	3050	2850	2500			
4th Stage			4500	4500	4500	4050	3600	3300	2950	2750	2500	2400	2200	1850	1750



800.452.5011
smileyliftingsolutions.com

NATIONWIDE RENTALS | SALES | SERVICE
FINANCING AVAILABLE